



# INDOFINE Chemical Company, Inc.

121 Stryker Lane, Bldg. 30, Suite 1 • Hillsborough, NJ 08844 • U.S.A.

Phone: (908) 359-6778 • FAX: (908) 359-1179

website: [www.indofinechemical.com](http://www.indofinechemical.com)

e-mail: [chemical@indofinechemical.com](mailto:chemical@indofinechemical.com)

## CERTIFICATE OF ANALYSIS

Catalog Number: 06-214

Product Name: **ALOE-EMODIN-8-O- $\beta$ -D-GLUCOPYRANOSIDE**

CAS Number: [33037-46-6]

Lot Number: 1608876

Chemical Formula:  $C_{21}H_{20}O_{10}$

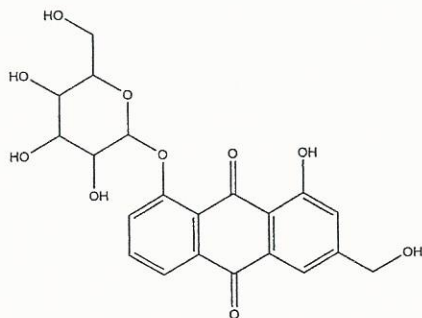
Molecular Weight: 432.38

Appearance: Brown powder

Loss on Drying: 2.23%

Storage: Store in a cool, dry place. Protect from light.

Purity(HPLC): 92.53%





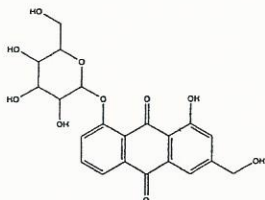
# INDOFINE Chemical Company, Inc.

121 Stryker Lane, Bldg. 30, Suite 1 • Hillsborough, NJ 08844 • U.S.A.

Phone: (908) 359-6778 • FAX: (908) 359-1179

website: [www.indofinechemical.com](http://www.indofinechemical.com)

e-mail: [chemical@indofinechemical.com](mailto:chemical@indofinechemical.com)



## HPLC ANALYSIS

Catalog No.: 06-214

Product Name: Aloe-emodin-8-O- $\beta$ -D-glucopyranoside

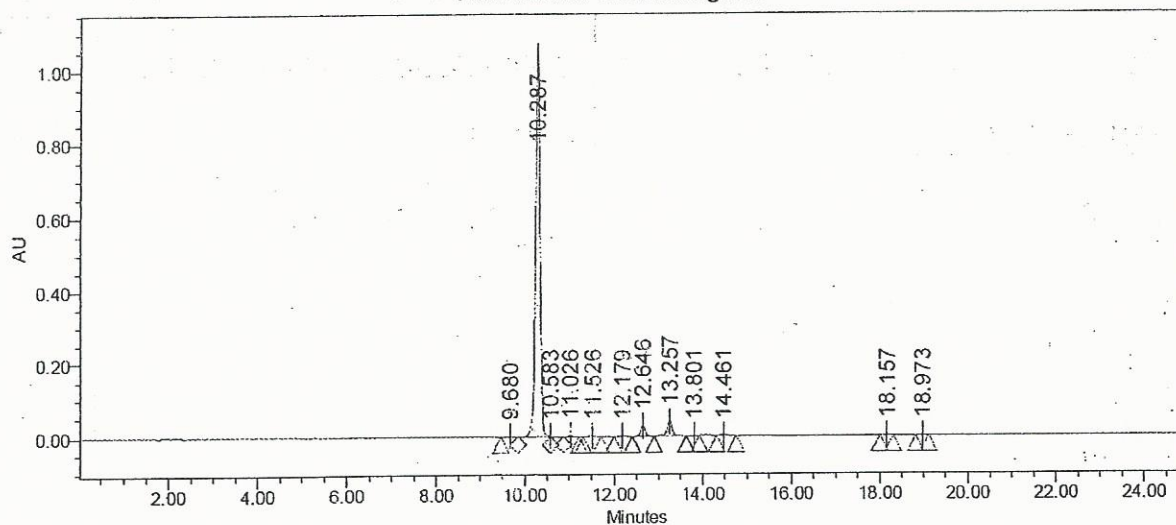
Lot No.: 1608876

### SAMPLE INFORMATION

Sample Name: Aloe emodin 8 glucoside  
Sample Type: Unknown  
Vial: 1  
Injection #: 1  
Injection Volume: 10.00 ul  
Run Time: 25.0 Minutes

Sample Set Name:  
Acq. Method Set: Aloe emodin 8 glucoside  
Processing Method: Samples  
Channel Name: 258.0nm  
Proc. Chnl. Descr.: PDA 258.0 nm

Auto-Scaled Chromatogram



### Peak Results

	Name	RT	Area	% Area	USP Plate Count	USP Resolution
1		9.680	3767	0.05	29298.77	
2		10.287	7305108	92.53	51012.89	2.88
3		10.583	8506	0.11		1.60
4		11.026	18312	0.23	51422.32	2.30
5		11.526	9549	0.12	51363.00	2.35
6		12.179	7580	0.10	62156.48	3.07
7		12.646	193664	2.45	77174.04	2.44
8		13.257	311720	3.95	74478.66	3.18
9		13.801	7575	0.10	67171.74	2.62
10		14.461	14434	0.18	79307.91	3.11
11		18.157	9709	0.12	132665.14	17.91
12		18.973	5060	0.06	106662.79	3.71